

## 1 General Overview

## 2 Description

- 2.1 Mounting instructions
- 2.2 Installation

## 3 Installation

- 3.1 Mounting instructions
- 3.2 Installation

## 4 Electrical Connection

- 4.1 Wiring connection

## 5 Commissioning

- 5.1 Calibration
  - 5.2 Manual Calibration
    - 5.2.1 Zero-point
    - 5.2.2 Gain
    - 5.2.3 Calculation of Control Voltage
  - 5.3 Calibration with Service Tool GCD-05
  - 5.4 Calibration with GCD-05 Configuration and Calibration Software
  - 5.5 Addressing, only GCD-05\_Bus mode
  - 5.6 Option Relay Output

## 6 Inspection and Service

- 6.1 Inspection
- 6.2 Calibration
- 6.3 Exchange of sensor element

## 7 Troubleshooting

- 7.1 Analogue Mode
- 7.2 DGC-05\_Bus Mode

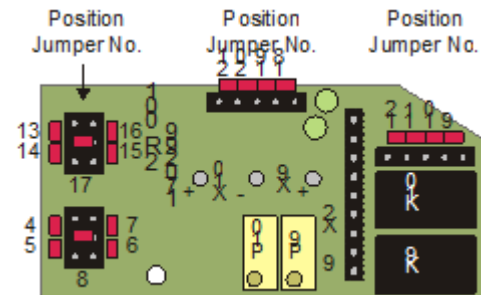
## 8 Cross-sensitivity Data

## 9 Technical Data

## 10 Figures

## 11 Notes and General Information

- 11.1 Intended product application
- 11.2 Installers' responsibilities
- 11.3 Maintenance
- 11.4 Limited warranty



## 1 General Overview

The analog gas transmitter NO<sub>2</sub> with digital processing of measuring values and temperature compensation is used for the continuous monitoring of the ambient air to detect the presence of Nitrogen Dioxide gas.

Main application ranges are underground car parks, tunnels, engine test stations, shelters, loading areas etc.

The intended sites are all areas being directly connected to the public low voltage supply, e.g. residential, commercial and industrial ranges as well as small enterprises (according to EN50 082).

The NO<sub>2</sub> analog transmitter must not be used in potentially explosive atmospheres.

## 2 Functional Description

### 2.1 Control Mode

In addition to the analog output the transmitter is equipped with a serial interface RS-485 for the connection to the GCD-05 system.

#### Analog mode:

The analog output can be selected as current signal with (0)4-20 mA or as voltage signal (0)2-10 V.

In the 4-20 mA mode and without any supplementary options, the NO<sub>2</sub> also works in the 2-wire technique.

#### GCD-05\_Bus mode:

The transmitter can be connected to the GCD-05 system via the RS-485 interface.

In this mode there is an analog input for the connection of an additional 4-20 mA transmitter.

The two measuring values are transmitted via the RS-485 interface to the gas controller.

The cable topology for the RS-485 bus can be taken from the "Guidelines for wiring and commissioning of the GCD-05 hardware".

The two control modes are available in parallel.

### 2.2 Sensor

The sensor portion of the NO<sub>2</sub> transmitter is a sealed electro-chemical cell with three electrodes, sensing, counter and reference.

The ambient air to be monitored diffuses through a membrane filter into the liquid electrolyte of the sensor.

The chemical process of the measurement is one of reduction where one molecule of the target gas is exchanged for one molecule of oxygen.

The reaction drives the oxygen molecule to the counter electrode, generating a DC microampere signal between the sensing and reference electrodes.

This signal is linear to the volume concentration of the sensed gas.

The signal is evaluated by the connected amplifier and transformed into a linear output signal.

Electrochemical processes always lead by and by to a loss of sensitivity.

Therefore regular calibration of zero-point and gain is obligatory. See also section 6.

#### Caution:

There is a small quantity of corrosive liquid in the sensor element.

If in case of damage persons or objects touch the liquid, you have to clean the affected areas as fast and carefully as possible with tap water.

Out of use sensors must be disposed in the same way as batteries.

## 3 Installation

### Note:

Avoid any force (e.g. by thumb) on the sensor element during operation or installation.

Electronics can be destroyed by static electricity.

Therefore, do not touch the equipment without a wrist strap connected to ground or without standing on a conductive floor.

### 3.1 Mounting instructions

When choosing the mounting site please pay attention to the following:

- **The specific weight of nitrogen dioxide NO2 is higher than that of air (factor 1,59).  
Recommended mounting height is 0,2m**
- Choose mounting location of the sensor according to the local regulations.
- Consider the ventilation conditions!  
Do not mount the transmitter in the center of the airflow (air passages, suction holes)
- Mount the transmitter at a location with minimum vibration and minimum variation in temperature (avoid direct sunlight).
- Avoid locations where water, oil etc. may influence proper operation and where mechanical damage might be possible.
- Provide adequate space around the sensor for maintenance and calibration work.

#### Duct mounting

- Mount only in a straight section of duct with minimum air vortex.  
Keep a minimum distance of 1 m (3,5 feet) from any curve or obstacle.
- Mount only in a duct system with a maximum air velocity of 10 m/s (2000 ft/min) or less.
- Mounting must be performed so that the airflow is in line with probe openings.

### 3.2 Installation

- Open cover of enclosure.
- Unplug basic PCB from terminal blocks.
- Fix bottom part by screws vertically to the wall (terminal blocks to the ground).
- Plug in the basic PCB at X4 and X5.
- Replace the cover.

## 4 Electrical Connection

Consider static electricity! See 3. Mounting

- Installation of the electrical wiring should only be executed by a trained specialist according to the connection diagram, without any power applied to conductors and according to the corresponding regulations!
- Avoid any influence of external interference by using shielded cables for the signal line, but do not connect the shield.
- Recommended cable for analog mode: J-Y(St)Y 2x2x0,8 LG (20 AWG), max. resistance 73  $\Omega$ /km (20.8  $\Omega$ /1000 ft).
- Required cable for RS-485 mode: J-Y(St)Y 2x2x0,8 LG (20 AWG), max. res. 73  $\Omega$ /km (20.8  $\Omega$ /1000 ft)
- It is important to ensure that the wire shields or any bare wires do not short the mounted PCB.

### 4.2 Wiring Connection

- Open the cover. Unplug basic PCB carefully from terminal blocks X4 and X5.
- Insert the cable and connect cable leads to terminal blocks. See fig. 1 and 2.
- Replug the PCB in the terminal blocks X4, X5 with care. Replace the cover.

### 4.3 Mounting option relay package 2R.

Consider static electricity! See 3. Mounting.

- Unplug basic PCB from terminal blocks fixed on base.
- Plug in the relay package at the multipoint connector X2 to the basic PCB . See Fig. 2
- Secure by the enclosed screw M2,5x 6 at the back side of the PCB.
- Re-plug basic PCB in the terminal blocks X4, X5.

## 5 Commissioning

Consider commissioning instructions at any exchange of the sensor element as well.

Only trained technicians should perform the following:

- Check mounting location.
- Select output signal form: Current or voltage, and starting point 0 or 20%. See fig. 4.
- Check power voltage.
- Check PCB for correct mounting at X4 and X5.
- Check the sensor for proper mounting at the connectors X7 of the PCB .
- Addressing of the transmitter in the GCD-05\_Bus mode.
- Calibrate the transmitter (if not already factory-calibrated).

Required instruments for commissioning (calibration) of the transmitter:

- Test gas bottle with synthetic air of NO<sub>2</sub>-free ambient air.
- Test gas bottle with NO<sub>2</sub> (ppm) in the range of 30 – 80 % of the measuring range.
- Gas pressure regulator with flow meter to control the gas flow to 150 ml/min.
- Calibration adapter with tube. Calibration set. See fig. 5.
- Digital voltmeter with range 0 – 300 mV, accuracy 1%.
- Small screwdriver.
- Calibration tool GCD-05 STL (only for calibration with service tool GCD-05).
- GCD-05 configuration and calibration software incl. USB/RS-485 communication set (only for software calibration mode).

#### Note:

Prior to calibration the sensor must be connected to the power supply and fully stabilised for at least 6 hours without interruption.

Please observe proper handling procedures for test gas bottles (regulations TRGS 220)!

NO<sub>2</sub> calibration gas is toxic, never inhale the gas!

Symptoms: Dizziness, headache and nausea.

Procedure if exposed: Take the victim into fresh air at once, call a doctor.

## 5.1 Calibration

Depending on the version and the control mode there are three different possibilities to calibrate the transmitter:

### Manual calibration

Manual calibration is only possible if the transmitter is equipped with the push-button "Zero" and the potentiometer "Gain" (= version for manual calibration).

Manual calibration is possible both in analog mode and in GCD-05\_Bus mode.

In the GCD-05\_Bus mode the jumper V-A has to be set before manual calibration.

Only by doing so the control voltage is available at the test pins X6.

Remove the jumper after calibration

### Calibration with the Service Tool GCD-05

In the standard version (equipped with the communication connector X12) the transmitter is delivered for tool and/or software calibration.

In the analog mode the service tool calibration is only possible with the 3-wire technique of the transmitter!

In the GCD-05\_Bus mode calibration is always possible.

### Software calibration via PC

In the standard version (equipped with the communication connector X12) calibration can also be done by means of the configuration and calibration software.

Software calibration is possible for both control modes.

## 5.2 Manual Calibration

### 5.2.1 Zero-point

- Connect calibration adapter carefully to the sensor element.
- Apply synthetic air (150 ml/min; 1 Bar (14.5 psi)  $\pm$  10%), or nitrogen dioxide (NO<sub>2</sub>)-free ambient air.
- Wait 2 minutes until the signal is stable, push button "Zero" for 5 seconds.

After successful calibration the measuring signal is corrected automatically.

Depending on the selected signal starting point the measuring signal shows the following values:

Signal start at 2 V or 4 mA                      40 mV = 0 ppm

Signal start at 0 V or 0 mA                      0 mV = 0 ppm

If the zero-point is out of the admissible range (> 20 mV at starting point 0% / > 60 mV at starting point 20%) before calibration, there is no correction of the measuring signal.

The sensor has to be replaced.

- Remove calibration adapter carefully by turning lightly.  
Check the sensor for correct mounting!

### 5.2.2 Gain

- Connect calibration adapter carefully to the sensor element.
- Apply calibration test gas NO<sub>2</sub> (150 ml/min; 1 Bar (14.5 psi)  $\pm$  10%).
- Wait three minutes until the signal is stable, adjust control voltage with potentiometer "Gain" until the signal corresponds to the calculated value  $\pm$  2 mV, see "Calculation of Control Voltage".
- Remove calibration adapter with a careful light turn. Check the sensor for correct mounting!

By limiting the gain factor, calibration will not be possible any more when the sensitivity of the sensor reaches a residual sensitivity of 30 %.

Then the sensor has to be replaced.

### 5.2.3 Calculation of Control Voltage

#### Signal start 2V / 4mA

$$\text{Control voltage (mV)} = \frac{160 \text{ (mV)} \times \text{test gas concentration NO}_2 \text{ (ppm)}}{\text{measuring range NO}_2 \text{ (ppm)}} + 40 \text{ (mV)}$$

#### Signal start 0V / 0 mA

$$\text{Control voltage (mV)} = \frac{200 \text{ (mV)} \times \text{test gas concentration NO}_2 \text{ (ppm)}}{\text{measuring range NO}_2 \text{ (ppm)}}$$

#### Example:

Measuring range	20 ppm
Test gas concentration	10 ppm NO <sub>2</sub>
Control voltage: Signal start 2V /4mA	120 mV
Control voltage: Signal start 0V /0mA	100 mV

#### Signal start 2 V / 4 mA

$$\frac{160 \text{ (mV)} \times 10 \text{ (ppm)}}{20 \text{ (ppm)}} + 40 \text{ (mV)} = 120 \text{ mV}$$

#### Signal start 0 V / 0 mA

$$\frac{200 \text{ (mV)} \times 10 \text{ (ppm)}}{20 \text{ (ppm)}} = 100 \text{ mV}$$

### 5.3 Calibration with GCD-05 Service Tool

- Connect the GCD-05 Service Tool to the transmitter, open menu "Calibration".
  - Enter measuring range and test gas concentration.
  - Connect calibration adapter carefully to the sensor element
  - Apply synthetic air (150 ml/min; 1 Bar (14.5 psi) ± 10%), or NO<sub>2</sub>-free ambient air.
  - Wait until the measuring value is stable, and then perform automatic zero calibration.
  - Apply calibration test gas NO<sub>2</sub> (150 ml/min; 1 Bar (14.5 psi) ± 10%).
  - Wait until the measuring value is stable, and then perform automatic gain calibration.
  - Remove calibration adapter carefully by turning lightly. Check the sensor for correct mounting!
- By limiting the gain factor, calibration will not be possible any more when the sensitivity of the sensor reaches a residual sensitivity of 30 %. In this case the sensor has to be replaced.

Further information can be taken from the user manual of the GCD-05 Service Tool.

### 5.4 Calibration with GCD-05 Configuration and Calibration Software

- Connect the PC via USB/RS-485 communication set to the transmitter, open menu "Calibration".
  - Enter measuring range and test gas concentration.
  - Connect calibration adapter carefully to the sensor element
  - Apply synthetic air (150 ml/min; 1 Bar (14.5 psi) ± 10%), or NO<sub>2</sub>-free ambient air.
  - Wait until the measuring value is stable, and then perform automatic zero calibration.
  - Apply calibration test gas NO<sub>2</sub> (150 ml/min; 1 Bar (14.5 psi) ± 10%).
  - Wait until the measuring value is stable, and then perform automatic gain calibration.
  - Remove calibration adapter carefully by turning lightly. Check the sensor for correct mounting!
- By limiting the gain factor, calibration will not be possible any more when the sensitivity of the sensor reaches a residual sensitivity of 30 %.

In this case the sensor has to be replaced.

Further information can be taken from the user manual of the DGC-05 Configuration and Calibration Software.

## 5.5 Addressing, only for GCD-05\_Bus mode

In the GCD-05\_Bus mode each transmitter gets its communication address.

In the standard version with the communication connector X12, addressing is done by means of the GCD-05 Service Tool or by the GCD-05 Configuration and Calibration Software.

See user manual of the Service Tool or of the Configuration and Calibration Software.

In the manual addressing version which can be identified by the address switch being equipped, there is a maximum of 60 addresses to be selected. See fig. 3.

The jumper is responsible to define the address group and the switch to define the address according to the following table.

Switchposition	Jumper pos. 01 = address	Jumper pos. 02 = address	Jumper pos. 03 = address	Jumper pos. 04 = address
0	inactive	inactive	inactive	inactive
1	01	16	31	46
2	02	17	32	47
3	03	18	33	48
4	04	19	34	49
5	05	20	35	50
6	06	21	36	51
7	07	22	37	52
8	08	23	38	53
9	09	24	39	54
A	10	25	40	55
B	11	26	41	56
C	12	27	42	57
D	13	28	43	58
E	14	29	44	59
F	15	30	45	60

## 5.6 Option Relay Output

The two relays are activated in dependence of the gas concentration.

If the gas concentration exceeds the adjusted alarm threshold, the corresponding relay switches on.

If the gas concentration falls below the threshold minus hysteresis, the relay switches off again.

The contact function for relay 2, NC (normally closed) or NO (normally open), can be selected via the jumper NO/NC. See fig 1 and 3.

Relay 1 is equipped with a change-over contact.

Via the ModBus interface the two alarm thresholds and the hysteresis are freely adjustable at the PC within the measuring range.

The procedure can be read from the user manual "ModBus Software".

The following parameters are factory-set.

**Alarm threshold 1 = Relay 1: 2 ppm**

**Alarm threshold 2 = Relay 2: 5 ppm**

**Switching hysteresis: 1 ppm**

## 6 Inspection and Service

### 6.1 Inspection

Inspection, service and calibration of the transmitters should be done by a trained technicians and executed at regular intervals.

We therefore recommend to conclude a service contract with AP or one of their authorized partners.

### 6.2 Calibration

(See part 5.1 and 5.2)

- At commissioning and at periodic intervals determined by the person responsible for the gas detection system (**recommendation every 6 months**).
- **After** exchange of the sensor
- If in case of operational or climatic influences the sensitivity of the sensor **falls below 30 %** in operation, calibration will not be possible any more.

Then the sensor has to be changed.

### 6.3 Exchange of sensor element

Static electricity (see section 3).

Sensor should always be installed without power applied:

- Unplug basic PCB EC-S carefully from the terminal blocks on the base.
- Unplug old sensor element from the PCB EC-S.
- Take the new sensor out of the original packing
- Plug in sensor element into the PCB at X7.
- Replug in the PCB in the terminal block X4, X5 carefully.
- Calibrate (see section 5.1).

## 7 Troubleshooting

### 7.1 Analogue Mode

Trouble	Cause	Solution
Output signal <3/1,5VmA and/or control voltage <30mV only for starting signal 2V/4mA	Jumper 0-20% not set	Check jumper position
	Power voltage not applied	Measure tension at X4 Two-wire: Pin1(+) and 4(-) Three-wire: Pin1 (+) and 2 (-)
	PCB not plugged in correctly at X4 and X5	Replug PCB correctly
	Wire break	Check the wiring
Output signal >22mA/220mV	Short-circuit	Check thewiring
Control voltage does not reach the calvulated value	Sensor element not calibrated Sensor sensitivity <30%	Calibrate the sensor element Replace the sensor element
No reaction of the output signal in spite of gas concentration	Power voltage not applied Signal (Pin4) not wired correctly	Measure tension at X4 Check the wiring



## 7.2 GCD-05\_Bus Mode

Trouble	Cause	Solution
Yellow LED not shining	Power voltage not applied	Measure tension at X4:Pin 1 (+) and 2 (-)
	PCB not plugged in correctly at X4/X5	Replug PCB correctly
Wire break	Check wiring	
Yellow LED not flashing	No communication at the transmitter	Transmitter not addressed, check bus wiring incl. topology and termination Voltage < 16 V
No control voltage at calibration	Jumper V-A not set	Set the jumper. Remove it after calibration!

## 8 Cross-sensitivity Data

The cross sensitivity can be read from the table Technical Data.

The table doesn't claim to be complete.

Other gases can have an influence on the sensitivity, too.

The indicated sensitivity data are only standard values referring to new sensor elements.



### 9 Specifications

#### General Sensor Performance

Type of gas	Nitrogen dioxide (No2)
Sensor element	Electrochemical, diffusion
Measuring range	0 – 20 ppm factory set, adjustable between 0-10 and 0-20ppm
Stability & resolution	± 0,1 ppm
Repeatability	± 2 % of reading
Long term output drift	< 2 % signal loss/year
Response time	$t_{90} \leq 60$ sec.
Sensor life expectancy	>2 years, normal operating environment
Sensor coverage	approx.400SQM "ideal conditions"
Mounting height	0,2m above floor

Cross Sensitivity	Concentration (ppm)	Reaction (ppm NO2)
Ethylene C2H4	100	0
Carbon Monoxide CO	300	0
Sulphur dioxide SO2	5	0
Nitric oxide NO	35	0
Hydrogen H2	300	0

#### Electrical

Power supply:	18 - 28Vdc (reverse polarity protected) 2-wire mode only Vdc
Power consumption:	22mA, (0,6VA), max.
- with relay package	35mA, max. (1,0VA)
GCD-05 Bus mode	12mA, max, (0,3VA)

#### Output Signal

Analog output signal	(0)4 – 20mA, load ≤ 500
Selectable	
Current/Voltage	(0)2 -10Vdc, load 50kohm
Optional	2 x relay contacts, potential-free, max. 30Vac/dc, 0,5A
Starting point 0/20%	Selectable proportional, overload and short-circuit proof

#### Serial interface

Transceiver	RS-485 / 19200 Baud (9600 ModBus)
Protocol, depending on version	DGC-05 or ModBus



## Operating Environment

Humidity Range:	15 to 95% RH non-condensing
Working temp.:	-10°C to + 45°C
Storage temperature	5°C to + 30°C (41 °F to 86 °F)
Pressure range	Atmospheric ±15%

## Physical characteristics

Enclosure material	Depending on type
Enclosure color	Depending on type
Dimensions (W x H x D)	113 x 135 x 45mm
Weight	0,5kg
Protection class	IP65
Mounting	Wall mounting, pilar mounting, depending on type
Cable entry	1 x M20
Wire connection	screw type terminal, min. 24 AWG (0.25 mm <sup>2</sup> ), max. 14 AWG (2.5 mm <sup>2</sup> )
Wire distance	Current Signal ca 500m Voltage signal ca 200m

<b>Approvals/Listings</b>	VDI 2053, Air conditioning plants for Underground Parking CE EMV-directive 89/336/EWG
---------------------------	---

<b>Warranty</b>	One year material and workmanship (without sensor)
-----------------	--

## Options

### Relay output

Alarm relay 1 (switching threshold 5 ppm)	30VAC/DC 0,5 A, potential-free, SPDT
Alarm relay 2 (switching threshold 8 ppm)	30VAC/DC 0,5 A, potential-free SPNO/SPNC
Power consumption	30 mA, (max. 0,8 VA)

### Warning buzzer

Acoustic pressure	85 dB (distance 300 mm) (1 ft.)
Frequency	3,5 kHz
Power consumption	30 mA, (max. 0,8 VA)

### LCD display

LCD	Two lines, 16 characters each, not illuminated
Power consumption	10 mA, (max. 0,3 VA)

### Heating

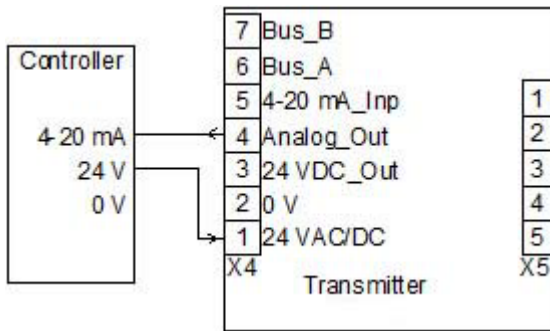
Temperature controlled	3 °C ±2°C (37.5 °F ± 35.5 °F)
Ambient temperature	- 30 °C
Power supply	18 - 28 VDC/AC
Power consumption	0,3 A; 7,5 VA

### Analog input

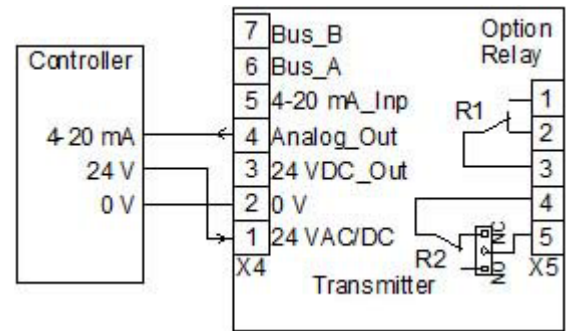
Only for RS-485 mode	4 – 20 mA overload and short-circuit proof, input resistance 200 Ω
Power supply for external transmitter	24 VDC max. 50 mA

### 10 Wiring Configuration

#### Analogue Mode

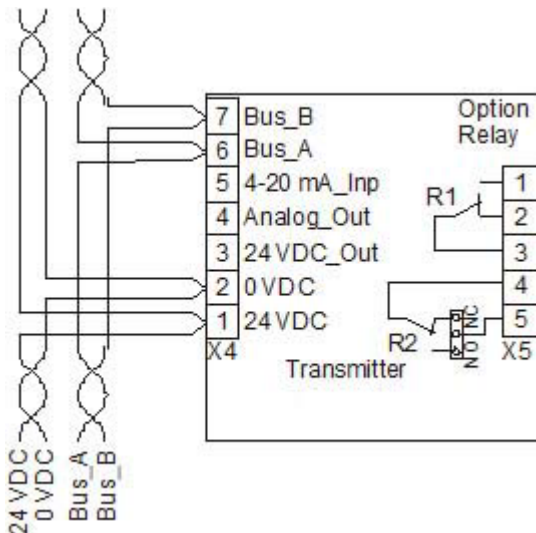


Two-wire connection  
4-20mA output signal without options

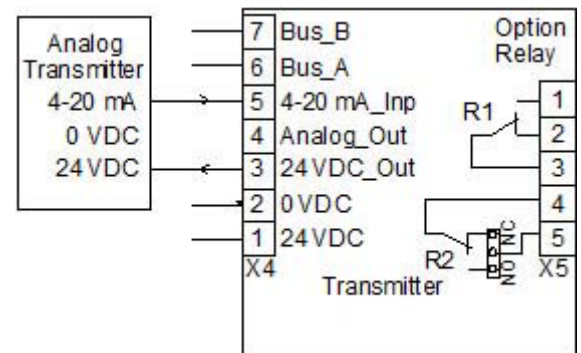


Three-wire connection  
- Vdc output signal  
- 0-20mA output signal  
- Relay output  
- LCD display  
- Heating

#### APPLICATION:GCD-05 BUS MODE

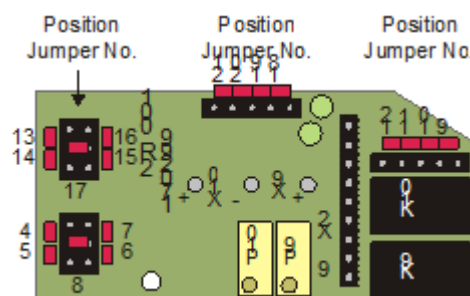


Connection field bus and tension

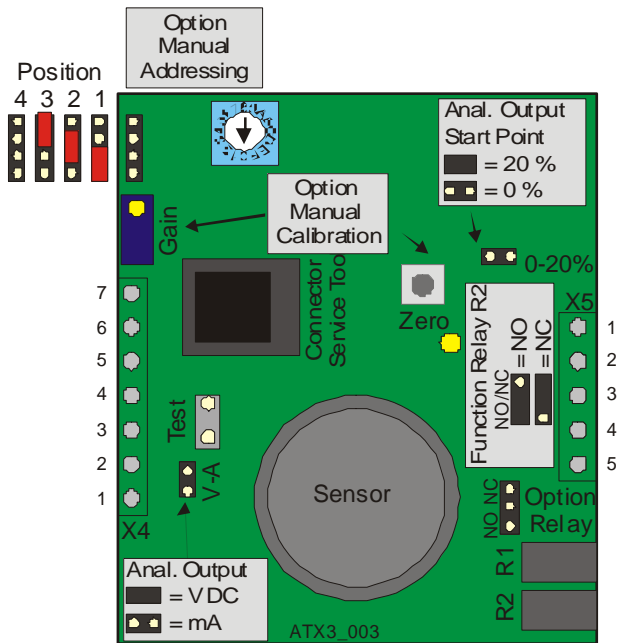


Connection analogue transmitter  
- Two- or three-wire connection,  
depending on transmitter type

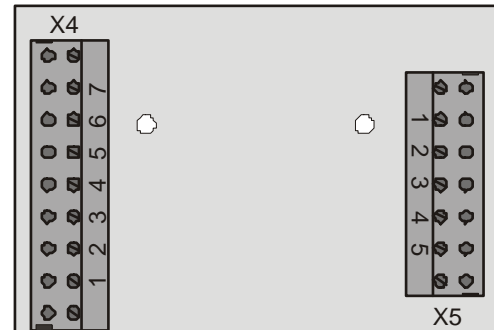
#### Option relay package 2R



## PCB EC-S



## Terminal Block



Selection analog output signal  
Fig. 4

Jumper 0- 20 %	Jumper V-A	Output signal
Not set	Not set	0 – 20 mA
Set	Not set	4 – 20 mA
Not set	Set	0 – 10 V
Set	Set	2 – 10 V

## Calibrations Set



## 11 Notes and General Information

It is important to read this user manual thoroughly and clearly in order to understand the information and instructions.

The AP transmitters must be used within product specification capabilities.

The appropriate operating and maintenance instructions and recommendations must be followed.

Due to on-going product development, AP reserves the right to change specifications without notice.

The information contained herein is based upon data considered to be accurate.

However, no guarantee is expressed or implied regarding the accuracy of this data.

### 11.1 Intended product application

The CMD transmitters are designed and manufactured for control applications and air quality compliance in commercial buildings and manufacturing plants (i.e. detection and automatic exhaust fan control for automotive maintenance facilities, enclosed parking garages, engine repair shops, warehouses with forklifts, fire stations, tunnels, etc.).

### 11.2 Installers' responsibilities

It is the installer's responsibility to ensure that all AP transmitters are installed in compliance with all national and local codes and OSHA requirements.

Installation should be implemented only by technicians familiar with proper installation techniques and with codes, standards and proper safety procedures for control installations and the latest edition of the National Electrical Code (ANSI/NFPA70).

It is also essential to follow strictly all instructions as provided in the user manual.

### 11.3 Maintenance

It is recommended to check the AP transmitter regularly.

Due to regular maintenance any performance deviations may easily be corrected.

Re-calibration and part replacement in the field may be implemented by a qualified technician and with the appropriate tools.

Alternatively, the easily removable plug-in transmitter card with the sensor may be returned for service to AP

### 11.4 Limited warranty

AP warrants the transmitters for a period of one (1) year from the date of shipment against defects in material or workmanship.

Should any evidence of defects in material or workmanship occur during the warranty period, AP will repair or replace the product at their own discretion, without charge.

This warranty does not apply to units that have been altered, had attempted repair, or been subject to abuse, accidental or otherwise.

The warranty also does not apply to units in which the sensor element has been overexposed or gas poisoned.

The above warranty is in lieu of all other express warranties, obligations or liabilities.

This warranty applies only to the AP transmitter.

AP shall not be liable for any incidental or consequential damages arising out of or related to the use of the AP transmitters.